

**+ Finlog®**

Log Homes from Finland

**The Natural Choice**



# LOG HOMES



*All Finlog homes can be  
built to your own  
design.*



# WELCOME TO FINLOG



**Rob & Sharon Sheridan**

**FINLOG** is a family run business and as such is able to provide valuable personal assistance to our clients from the design stage through to the construction. We specialise in providing you with genuine log buildings made in our own factory in Finland, manufacturing our log buildings to the clients individual requirements.

By exploring the log home market you have taken the first step towards

truly sustainable living. At Finlog we will strive to make the whole experience a happy and fulfilling one – as it should be. We hold family values very high on our agenda and carry out our business accordingly. It can be a daunting task to tackle and we will help you achieve your log home dream.

Finlog source the main ingredient, the logs, from northern Finland and Russia, this is the single most important piece of a log structure and should not be compromised on. Finlog offer a renewable guarantee

*Please browse through our standard designs or Finlog can design a home just for you.*

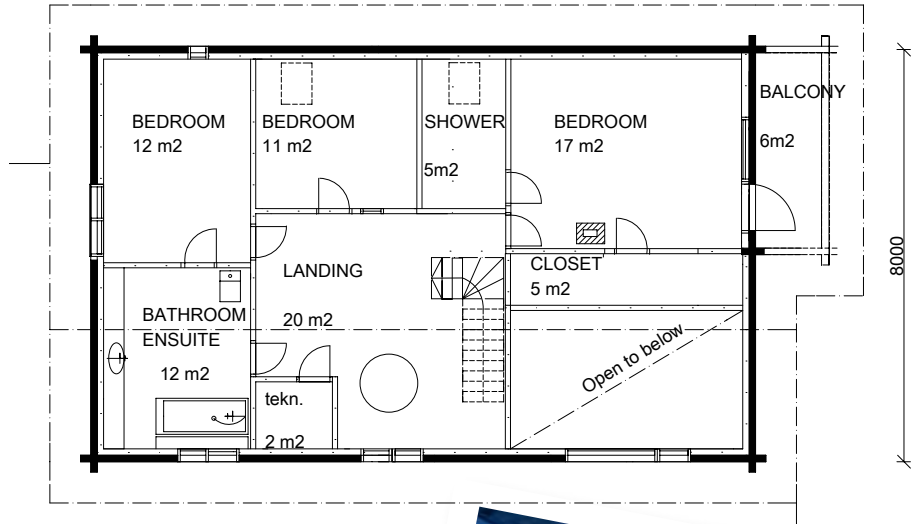
to show how confident we are of the quality of our log homes (subject to contract).

All our timber is sourced from Finland and Russia as a result is very slow grown, strong and stable. This is why with the right maintenance we can offer our endless guarantee.

# WHITE STALK

Groundfloor	156 m <sup>2</sup>
Terrace	35 m <sup>2</sup>
Upperlevel	104 m <sup>2</sup>
Balcony	6 m <sup>2</sup>
<b>Total</b>	<b>300 m<sup>2</sup></b>

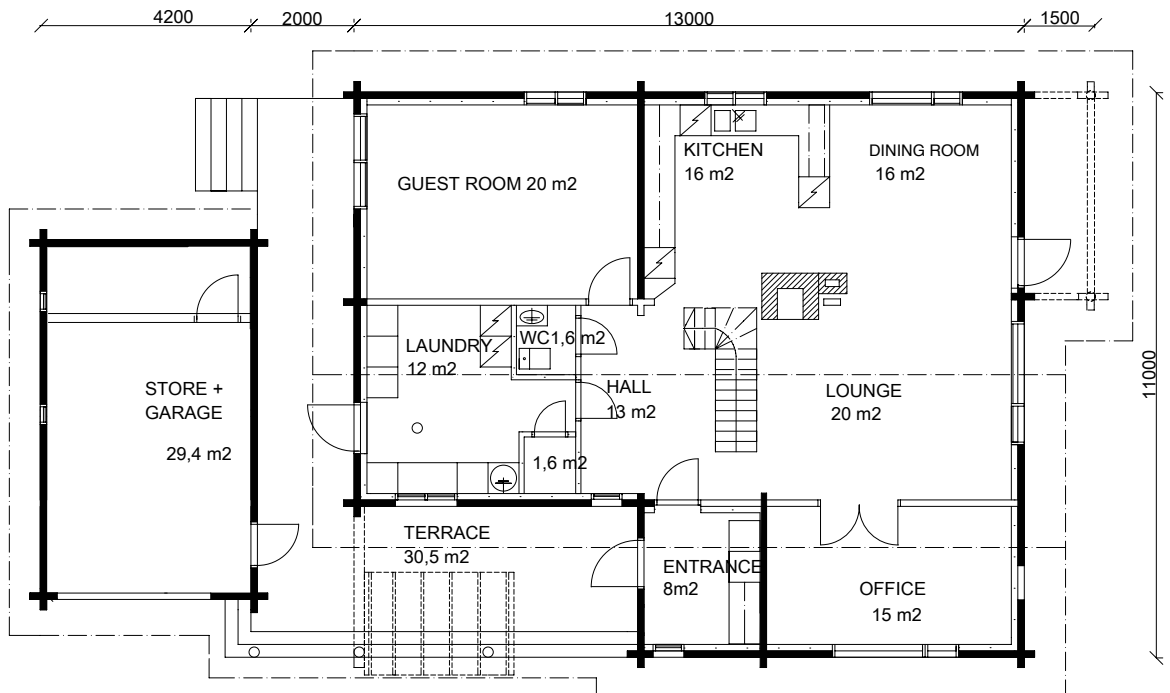
UPSTAIRS:



*A truly sustainable home.*



*Let us help you to build your dream home.*

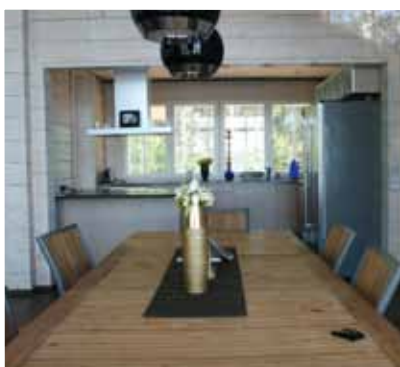


# BLACK HERON

Groundfloor 300 m<sup>2</sup>  
 Terrace 184 m<sup>2</sup>  
**Total 484 m<sup>2</sup>**



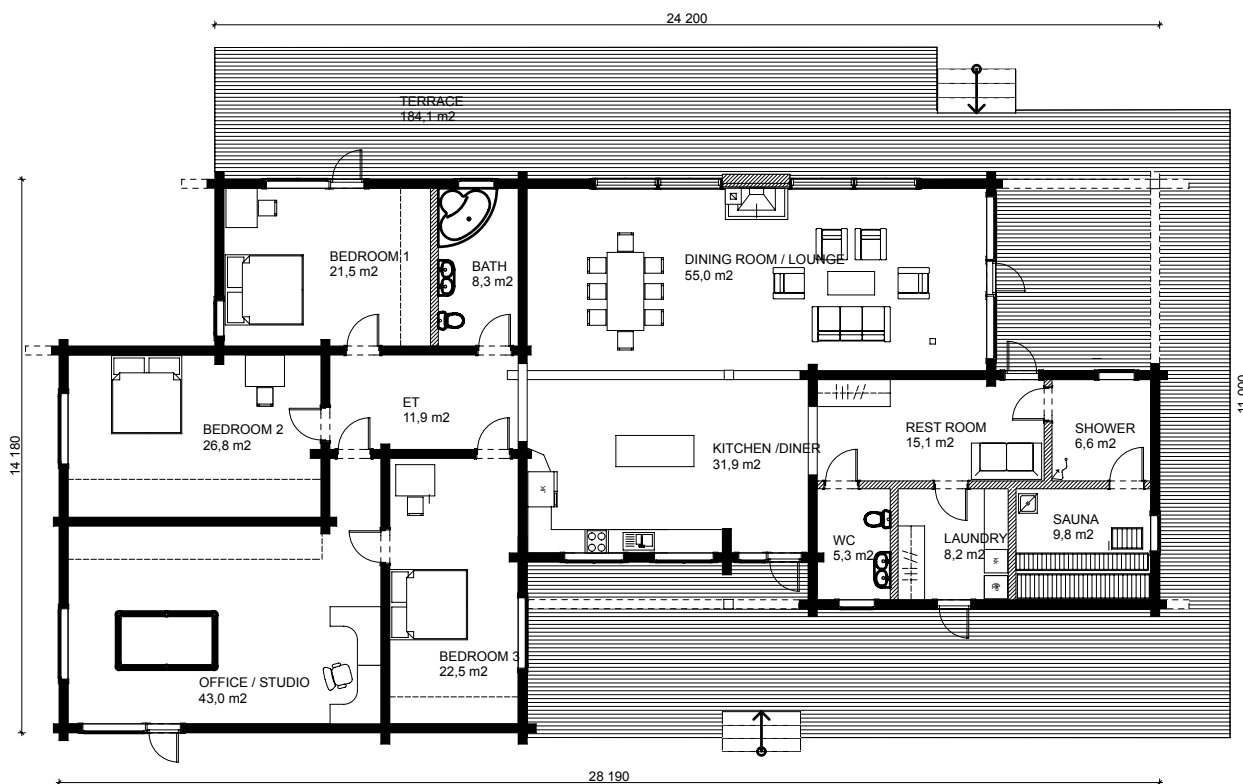
Double or triple glazing.



We use our own staff for construction.

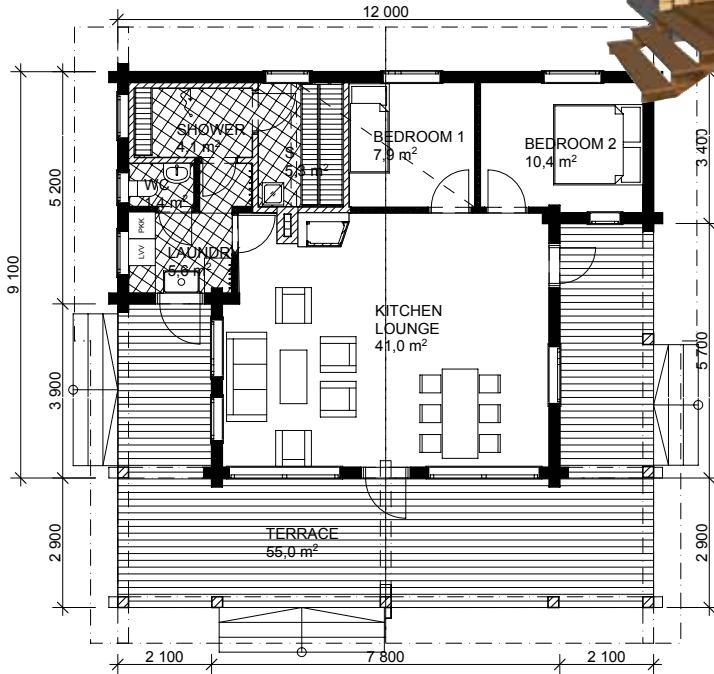


20 different log profiles and thicknesses to choose.



# GREY OWL

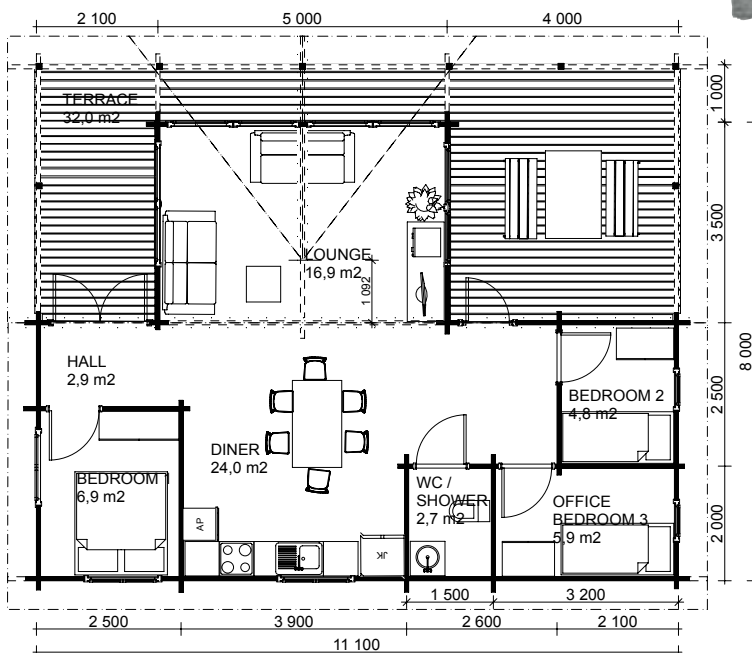
Groundfloor 89 m<sup>2</sup>  
 Terrace 55 m<sup>2</sup>  
 Loft 11 m<sup>2</sup>  
**Total 155 m<sup>2</sup>**



*C.A.D. design service  
 for your future home.*

# OSPREY

Groundfloor 67.5 m<sup>2</sup>  
 Terrace 32.5 m<sup>2</sup>  
**Total 100 m<sup>2</sup>**



*Natural materials for  
 natural living.*

# KESTREL

Groundfloor 143.0 m<sup>2</sup>  
 Loft 55.0 m<sup>2</sup>  
 Terrace 42.5 m<sup>2</sup>  
**Total 240.5 m<sup>2</sup>**



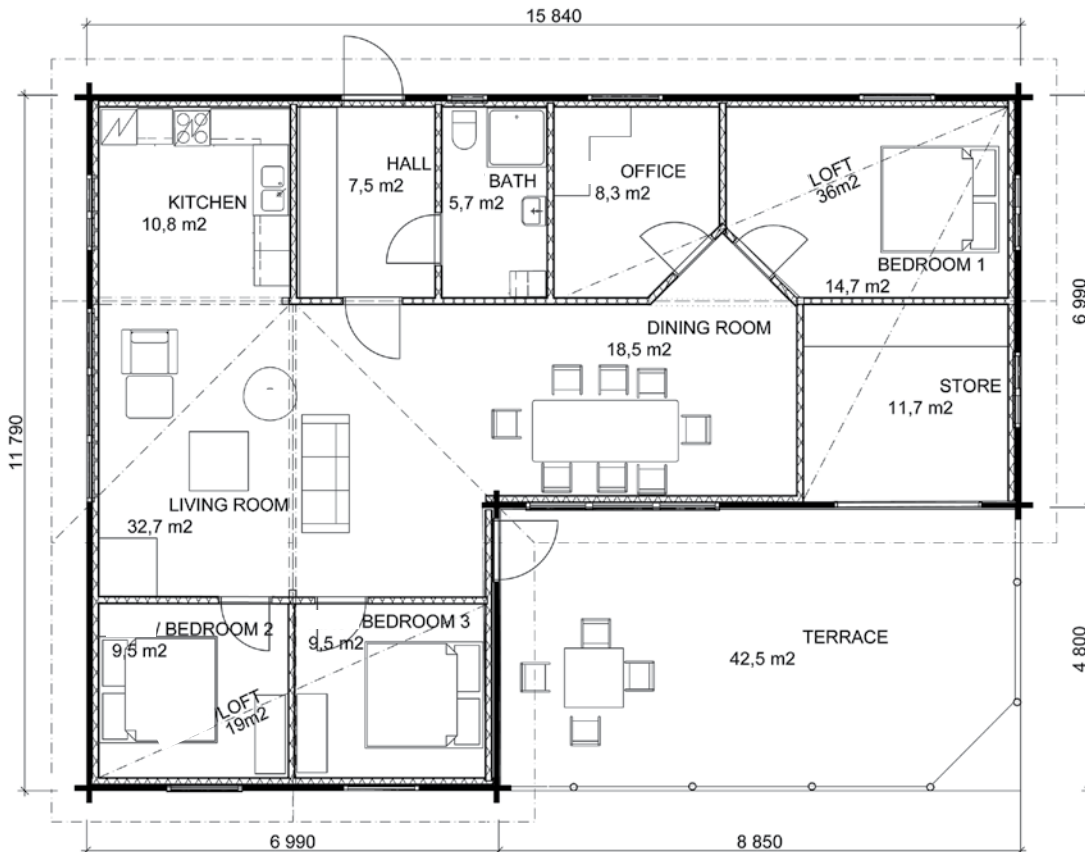
*Endless guarantee etc.*



*Please see [www.finlog.co.uk](http://www.finlog.co.uk)  
 or call office for more  
 information.*

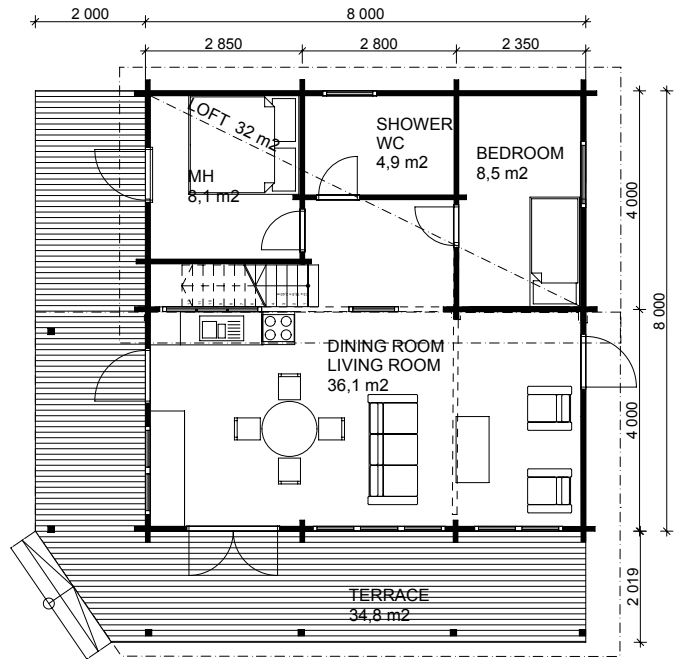


*Comfortable, cozy  
 and warm.*



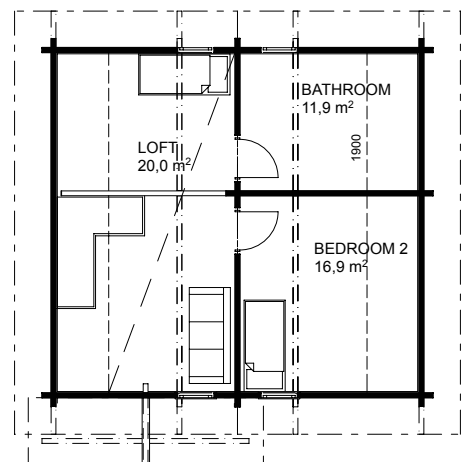
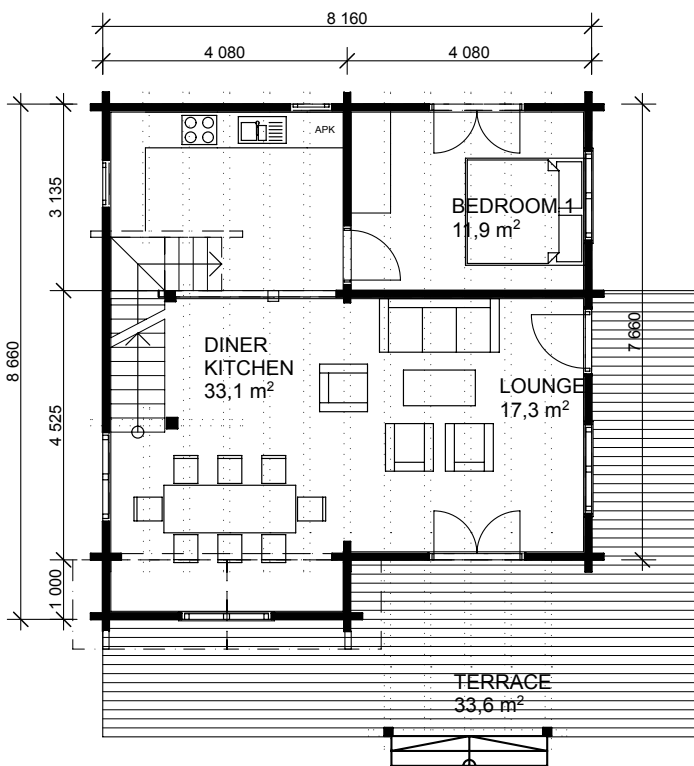
# SPARROW HAWK

Groundfloor	60 m <sup>2</sup>
Loft	24 m <sup>2</sup>
Terrace	35 m <sup>2</sup>
<b>Total</b>	<b>119 m<sup>2</sup></b>



# MUTE SWAN

Groundfloor	62.5 m <sup>2</sup>
First Floor	58.5 m <sup>2</sup>
Terrace	34.0 m <sup>2</sup>
<b>Total</b>	<b>155.0 m<sup>2</sup></b>



# EAGLE OWL

Groundfloor	114 m <sup>2</sup>
Loft	58 m <sup>2</sup>
Terrace	41 m <sup>2</sup>
<b>Total</b>	<b>213 m<sup>2</sup></b>



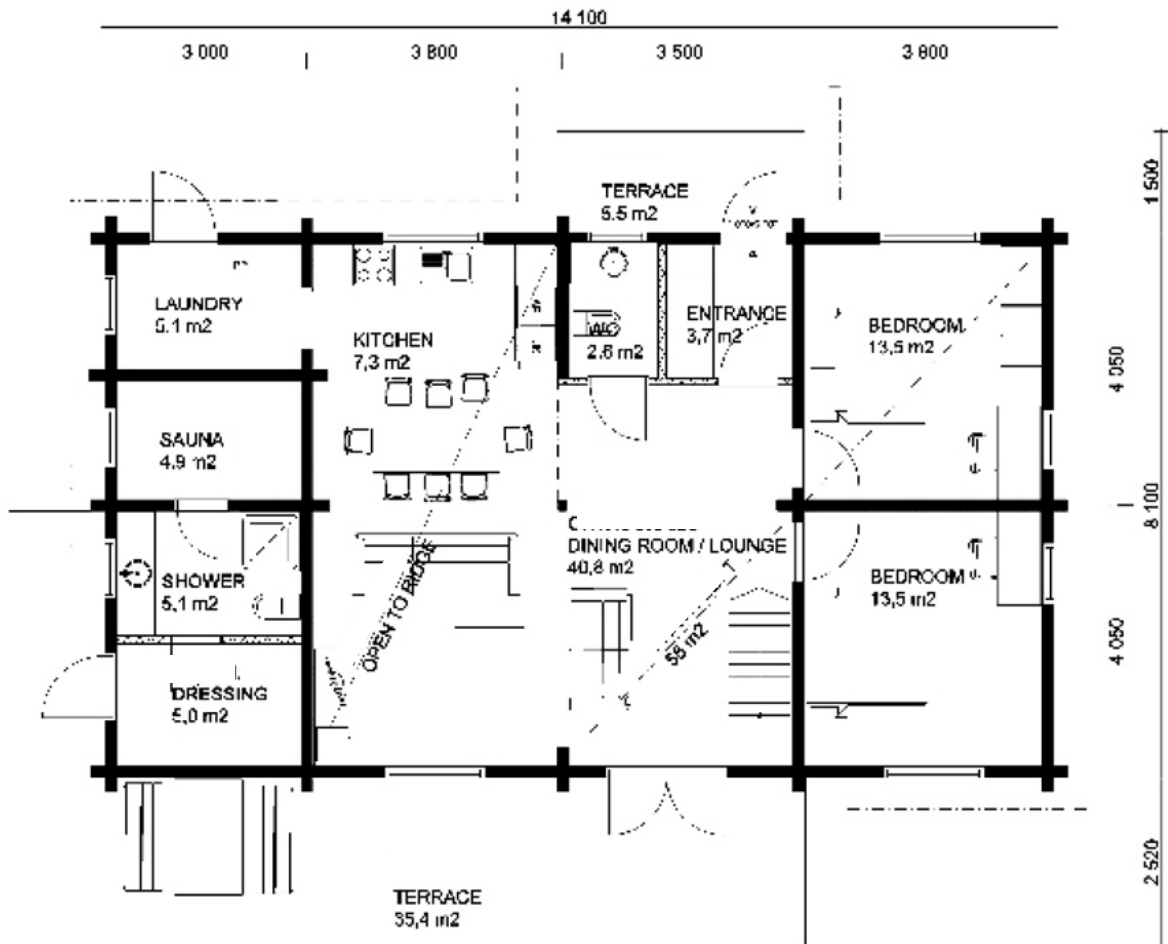
*Finlog is a family run business.*



*3 regional offices Hertfordshire, Cumbria and Shropshire.*

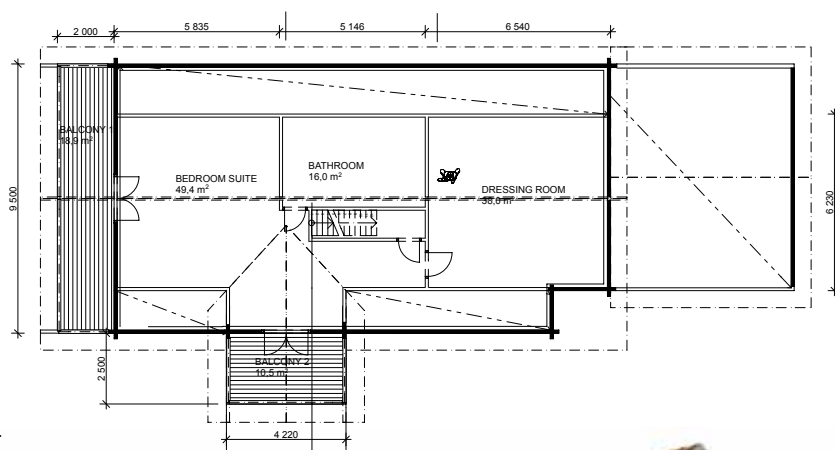
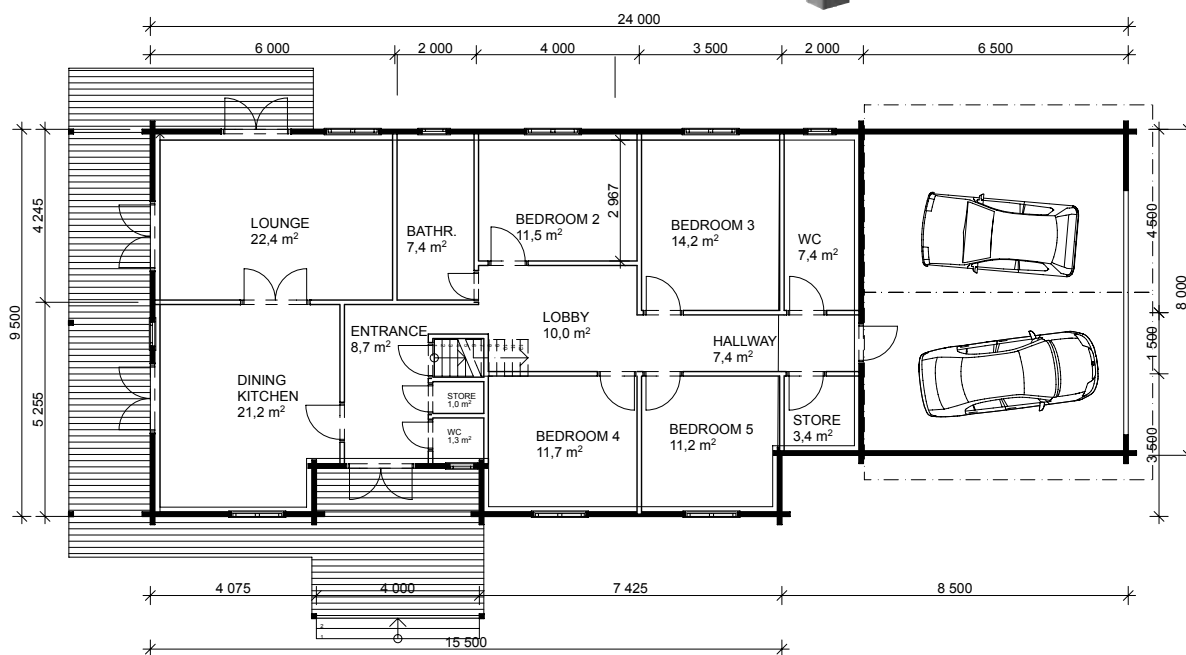


*All fabrication carried out in our finnish factory.*



# WHITE PELICAN

Groundfloor 157.9 m<sup>2</sup>  
 First Floor 157.9 m<sup>2</sup>  
 Garage 52.0 m<sup>2</sup>  
**Total 368.0 m<sup>2</sup>**



*This was designed for a large farming family with room for a tractor!*



# FISH HAWK

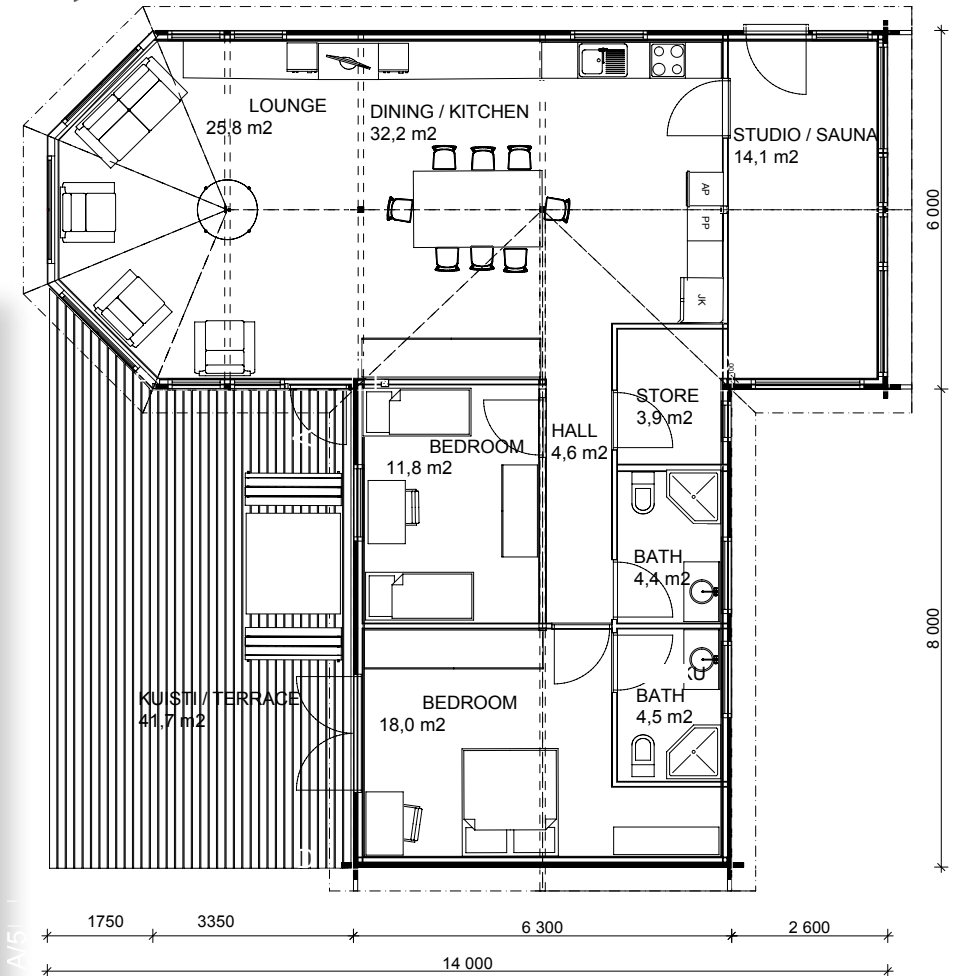
Groundfloor 121 m<sup>2</sup>  
 Terrace 42 m<sup>2</sup>  
**Total 163 m<sup>2</sup>**



*The Fish Hawk was designed to replace an existing brick building on the same footprint.*



*Choice of solid or laminated log.*



# WHEATER

Groundfloor 133 m<sup>2</sup>  
 Terrace 64.5 m<sup>2</sup>  
**Total 197.5 m<sup>2</sup>**

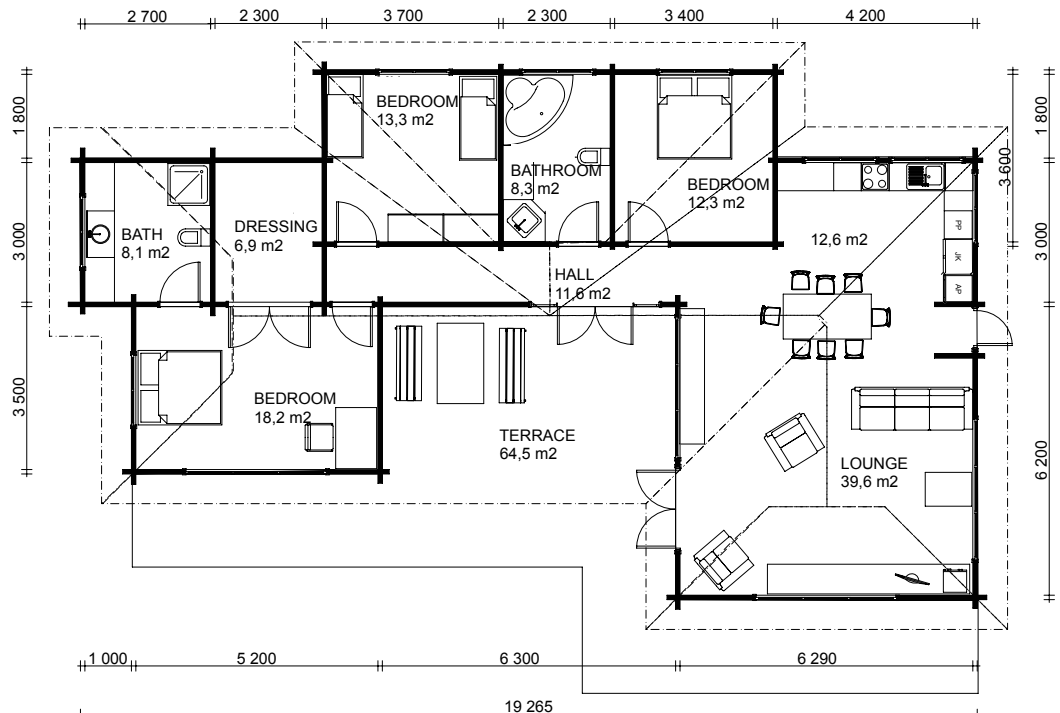
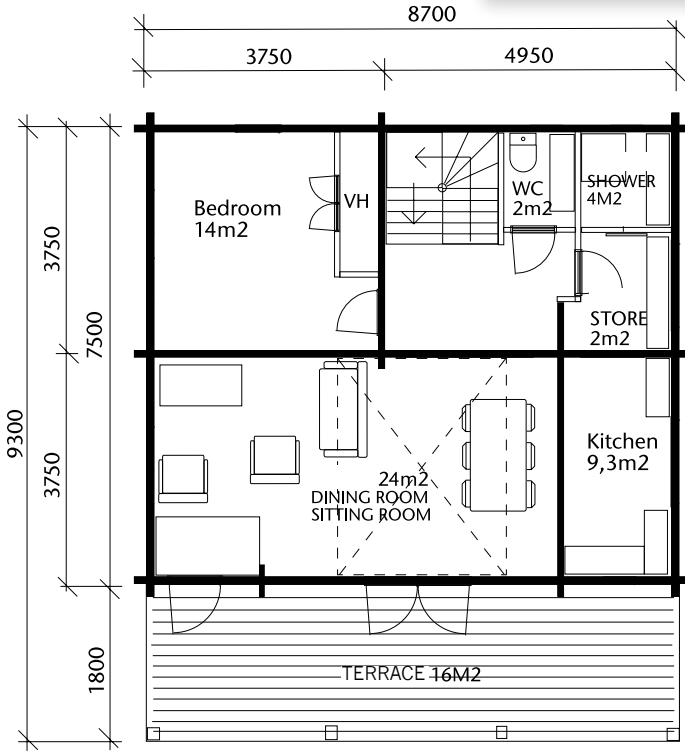
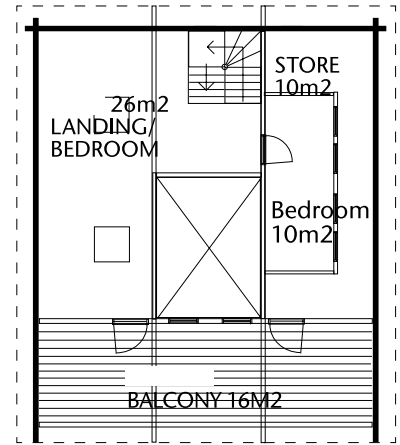


# SWAN

Groundfloor	65 m <sup>2</sup>
Loft	36 m <sup>2</sup>
Terrace	16 m <sup>2</sup>
Balcony	16 m <sup>2</sup>
<b>Total</b>	<b>133 m<sup>2</sup></b>



*Finlog also construct mobile homes.*



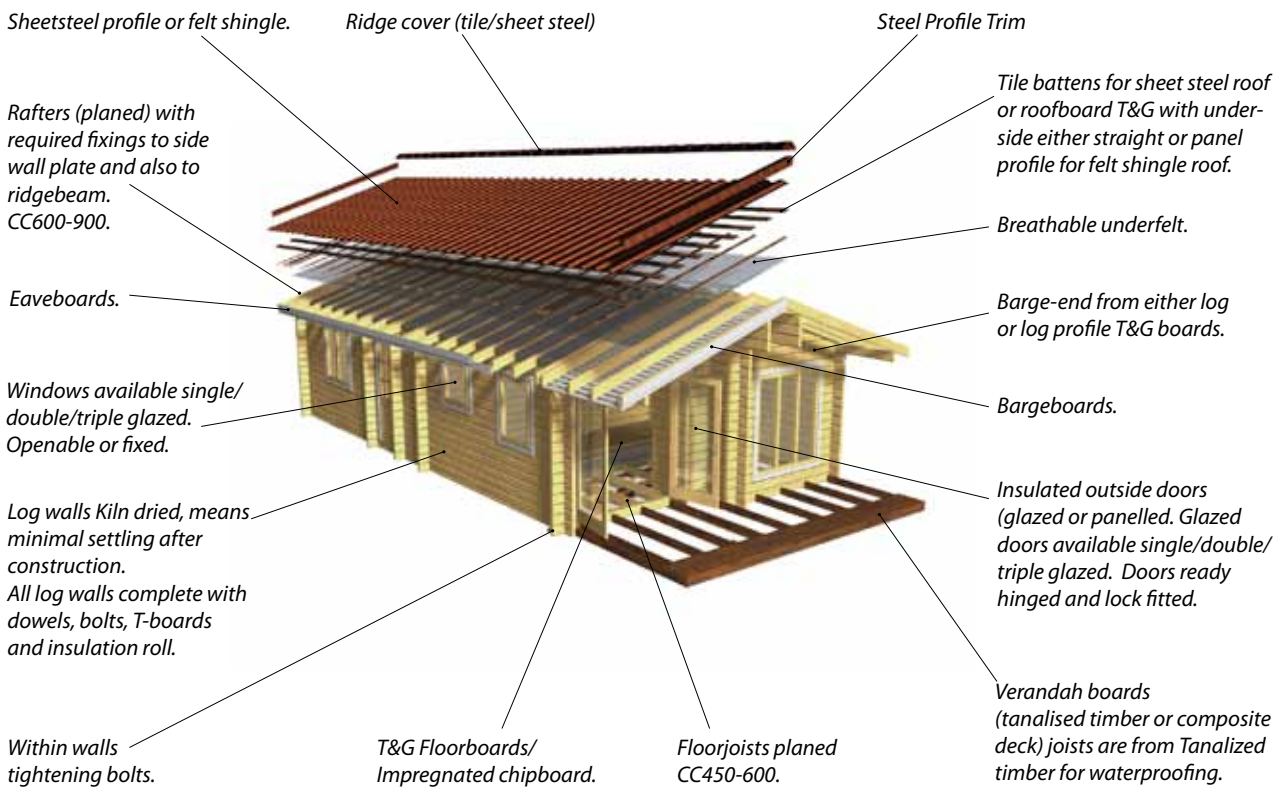
## STANDARD SPEC

- 88 mm laminated log (slow grown varieties)
- Rafter roof system (7 component)
- Choice of roof coverings
- Up to 100 mm floor insulation
- Laminated doors and windows
- Barge, soffit – fascia boards
- Double glazing
- Quality door locks
- Internal door key locks
- Finlog pioneering warranty protection
- Quality as standard



## POPULAR OPTIONAL EXTRAS

- 70 mm logs – 250 mm laminated logs
- Round logs 150 – 260 mm
- Door gable's
- Folding patio doors
- seamless guttering
- Composite non slip decking and balustrades
- Organic 2 coat wood stain system
- Fire proofing
- Underfloor heating option
- Organic insulations
- Plaster-boarded inside walls
- Triple glazing
- Larger windows
- Redwood or Oak flooring
- Choice of any colour
- Annual Maintenance check



### Finlog Head Office:

Mulberry Lodge,  
1a Eversleigh Road,  
New Barnet,  
Hertfordshire,  
EN5 1NE.  
Tel: 08458 12 13 14  
Fax: 020 8449 7047  
Email: info@finlog.co.uk

### Finlog North

Sawmill Cottage  
Longtown  
Carlisle  
Cumbria  
CA6 5PQ  
Tel: 01228 577385  
Mob: 07881 921339

### Finlog Midlands

Cantlop House Barn  
Cantlop  
Shrewsbury  
Shropshire  
SY5 6HQ  
Tel: 0845 519 4048  
Mob: 07710 678213



[www.finlog.co.uk](http://www.finlog.co.uk)

Finlog is a registered trademark.

### Finlog Factory

Preloc Oy Ltd.  
Lappeenranta  
FINLAND

**Finlog**<sup>®</sup>  
Log Homes from Finland